

# Sample Case #4



*The highest commitment to excellence.*

# Sample Case #4

## Opening Scenario:

A 15-year, 2-month-old female presents with crowding and an open bite. The patient's chief complaint is "I don't like my smile".

# Sample Case #4

## Question 1



# Sample Case #4

## Question 1

### Classification

- Domain 1: Data Gathering and Diagnosis

### Prompt

- What are the skeletal components of this patient's open bite?

### Model Responses

- The board expects a fully proficient response for this question to include four components and a borderline proficient response to include three.

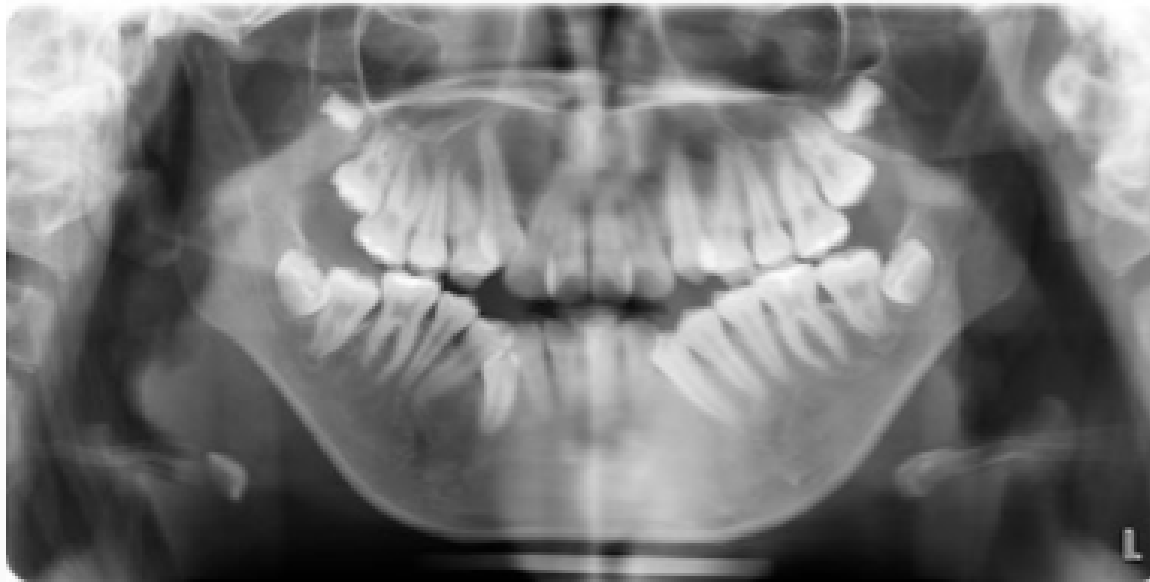
# Sample Case #4

## Question 2



# Sample Case #4

## Question 2



# Sample Case #4

## Question 2

### Classification

- Domain 1: Data Gathering and Diagnosis

### Prompt

- What are the dental components of this patient's open bite?

### Model Responses

- The board expects a fully proficient response for this question to include five components and a borderline proficient response to include four.

# Sample Case #4

## Question 3

### Classification

- Domain 2: Treatment Objectives and Planning

### Prompt

- Describe the ideal dental treatment objectives for this patient.

### Model Responses

- The board expects a fully proficient response for this question to include at least six treatment objectives and a borderline proficient response to include five.

*\*Refer to images in questions 1 and 2*



# Sample Case #4

## Question 4

### Classification

- Domain 2: Treatment Objectives and Planning

### Prompt

- Describe the ideal skeletal treatment objectives for this patient.

### Model Responses

- The board expects a fully proficient response for this question to include six treatment objectives and a borderline proficient response to include five.

*\*Refer to image in question 1*

# Sample Case #4

## Question 5

### Classification

- Domain 2: Treatment Objectives and Planning

### Prompt

- Describe the ideal treatment plan for this patient.

### Model Responses

- The board expects a fully proficient response for this question to include at least six components and a borderline proficient response to include five.

*\*Refer to images in questions 1 and 2*

# Sample Case #4

## Question 6



# Sample Case #4

## Question 6

### Classification

- Domain 3: Treatment Implementation and Management

### Prompt

- The patient has declined surgery and treatment has been implemented. What are the next steps for correcting the patient's open bite?

### Model Responses

- The board expects a fully proficient response for this question to include two steps and a borderline proficient response to include one.

# Sample Case #4

## Question 7

### Classification

- Domain 3: Treatment Implementation and Management

### Prompt

- List the intrusion mechanics that could be used to treat the patient from this point.

### Model Responses

- The board expects a fully proficient response for this question to include at least three intrusion mechanics (mandibular must be included) and a borderline proficient response to include two (mandibular must be included).

*\*Refer to images in question 6*

# Sample Case #4

## Question 8



# Sample Case #4

## Question 8



# Sample Case #4

## Question 8

### Classification

- Domain 4: Critical Analysis and Outcomes Assessment

### Prompt

- Which outcomes from the ideal treatment are the most unstable?

### Model Responses

- The board expects a fully proficient response for this question to include at least six outcomes and a borderline proficient response to include five.