

# Sample Case #3



*The highest commitment to excellence.*

# Sample Case #3

## Opening Scenario:

A 12-year, 5-month-old female presents without a chief complaint. Her dentist recommended she sees an orthodontist.

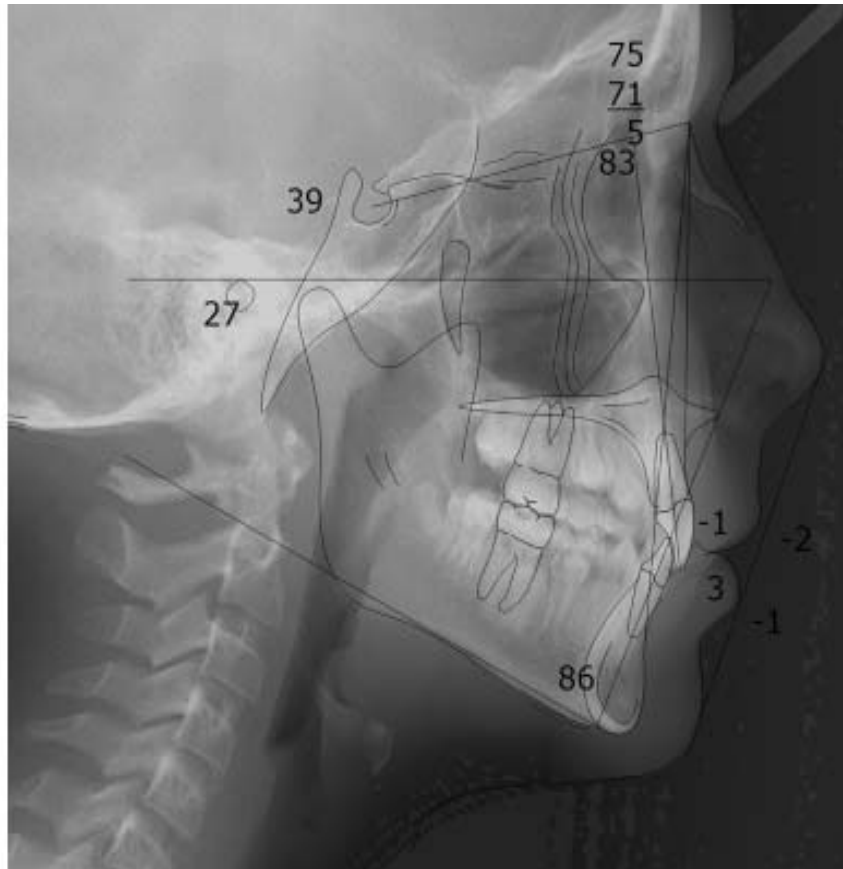
# Sample Case #3

## Question 1



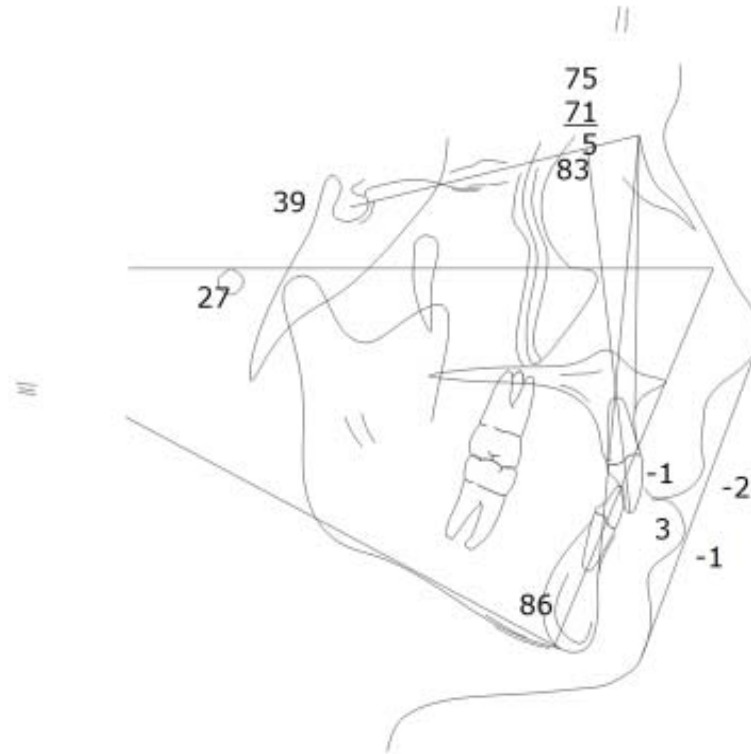
# Sample Case #3

## Question 1



# Sample Case #3

## Question 1



# Sample Case #3

## Question 1

### Classification

Domain 1: Data Gathering and Diagnosis

### Prompt

What is the skeletal diagnosis for this patient?

### Model Responses

The board expects a fully proficient response for this question to include at least four components and a borderline proficient response to include three.

# Sample Case #3

## Question 2



# Sample Case #3

## Question 2





# Sample Case #3

## Question 2

### Classification

Domain 2: Treatment Objectives and Planning

### Prompt

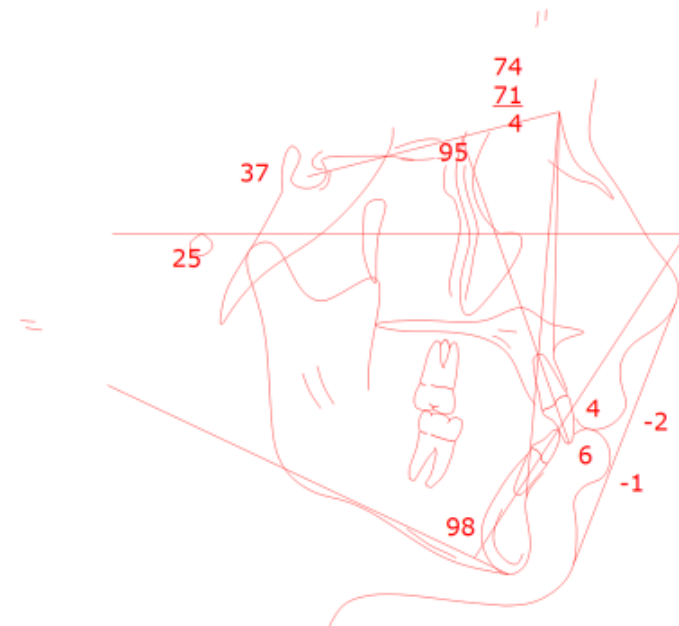
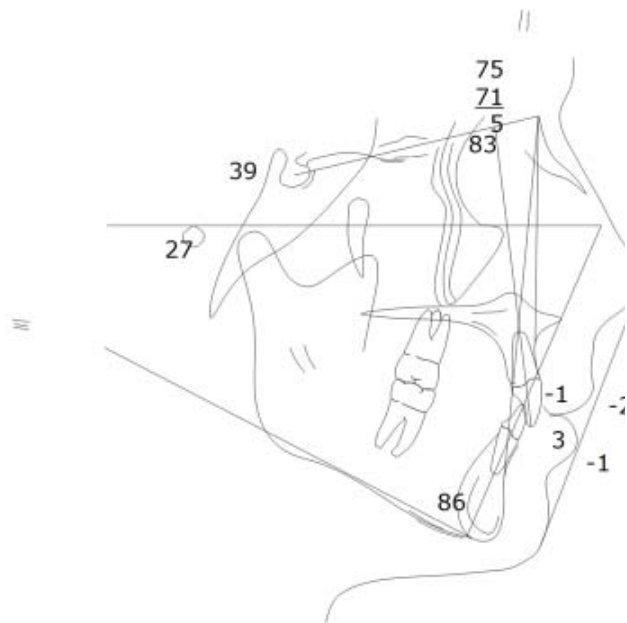
Describe the patient's skeletal maturation and growth potential.

### Model Responses

The board expects a fully proficient response for this question to include four observations and the correct conclusion of growth potential. A borderline proficient response should include three observations and the correct conclusion of growth potential.

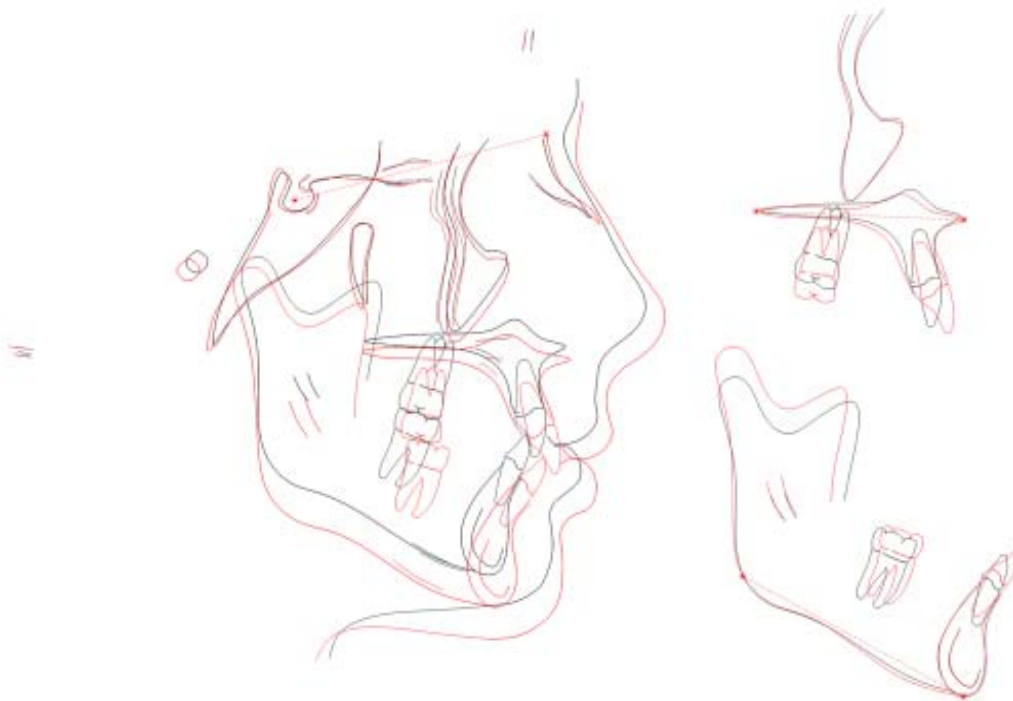
# Sample Case #3

## Question 3



# Sample Case #3

## Question 3



# Sample Case #3

## Question 3

### Classification

Domain 4: Critical Analysis and Outcomes Assessment

### Prompt

Assuming the time between pre- and post-treatment records was 34 months, what part of the dental changes shown occurred as the result of treatment?

### Model Responses

The board expects a fully proficient response for this question to include five dental changes and a borderline proficient response to include at least three.